

Script for the
Virtual Stroke Lab Tutorial

Navigation

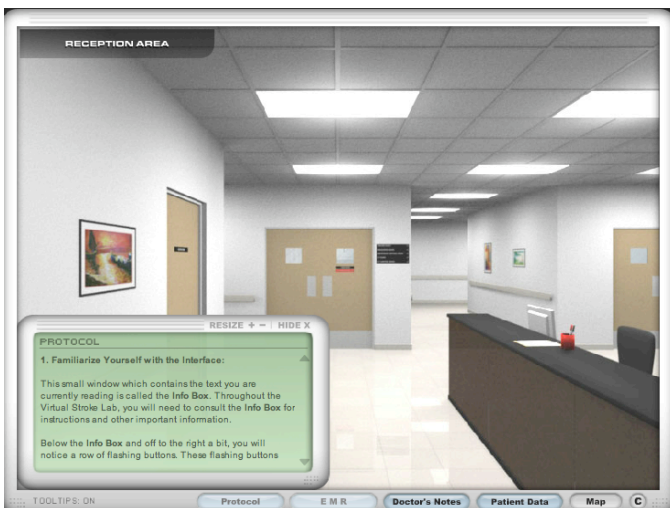
<http://www.mind.ilstu.edu>



**THE MIND
PROJECT**

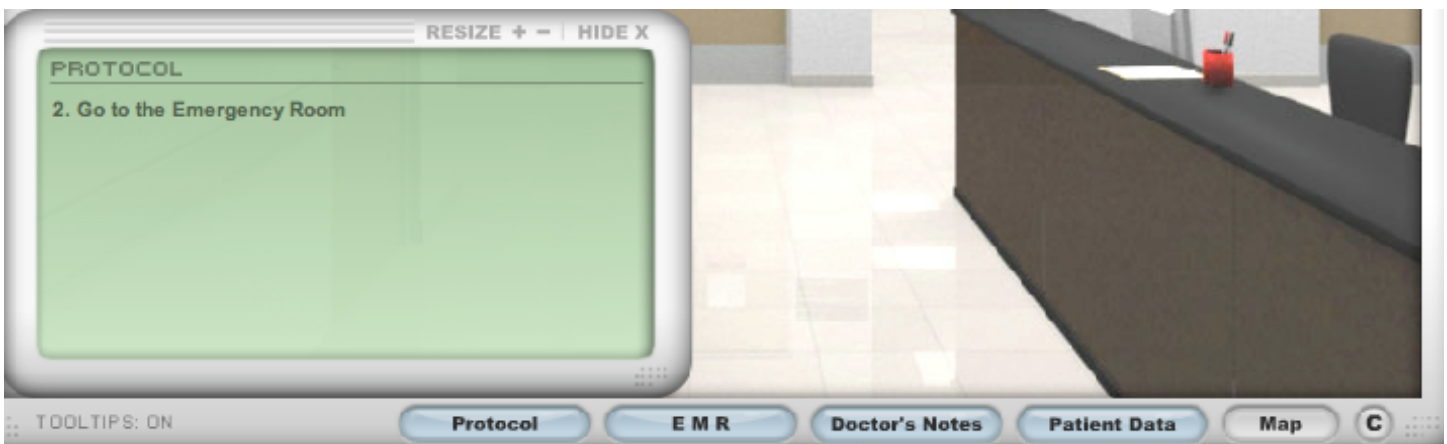
Introduction

This podcast provides tips on how to navigate within “The Virtual Stroke Lab,” a free virtual lab available from The Mind Project.



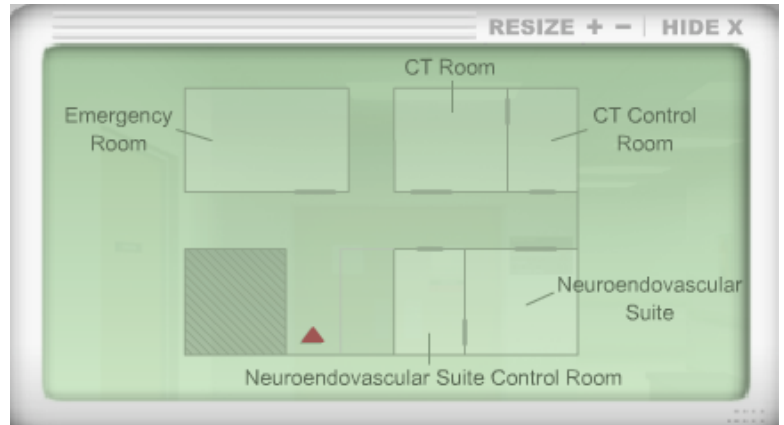
When the lab is first launched, you will be prompted to type in your name. Then instructions on how to start are presented. Before you can jump into the lab, you are asked to familiarize yourself with the virtual interface. Start by reading what is in the green “Info Box” in the lower left hand corner. Then click on each of the flashing buttons for a description of the information that each button provides. Knowledge of the navigation system is important. Many times there is more information in the info box, than you can see. Use the arrows on the right side of the box to scroll down and view the additional text.

The green info box may be resized larger and smaller by using the “resize plus and minus” icon in the upper right hand corner. You also have the ability to relocate the info box to any position within the window that you would like. You also can close the info box entirely by clicking on the “Hide X” icon in the upper right-hand corner of the box. Then, when you want to view the info box again, click on either the Protocol or Dr.’s Notes button in the menu bar at the bottom of your screen.

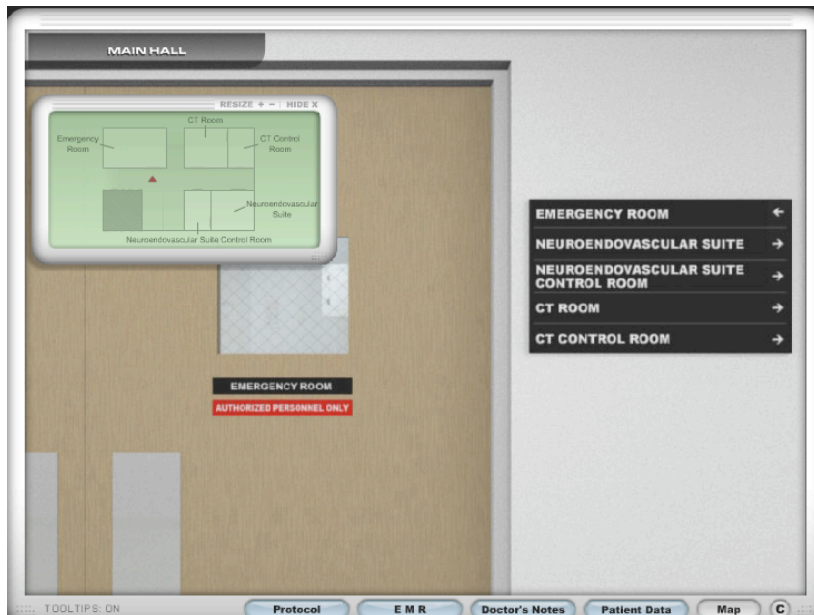


Navigation

In *The Virtual Stroke Lab*, You will become a neuroradiologist, working in a radiology department at a hospital. The different imaging machines are located in different rooms on the hospital floor. There are times in the lab that you must move from one area of the hospital to another. The Map button is located in the far right of your menu bar at the bottom of your screen. This map shows you a blueprint view of the hospital layout. As you see here, the map labels each of the rooms, emergency room, CT Room, CT Control Room, Neuroendovascular Suite and its Control Room.



The blinking red arrow represents not only where you are located in relation to the floor plan, but also the direction you are facing. To move within the lab, you'll move the cursor somewhere outside the info box. A red arrow will appear. The arrow moves with your cursor. So if your cursor is along the left side of your screen, the arrow points left. The arrow points straight ahead in the center of the screen and will allow you to move forward. And if you want to turn around 180 degrees, move the cursor along the bottom of the screen until you see a circular arrow. Once you have the arrow pointing in the direction you want to go, click. Notice here how my view of the hospital floor changes with my new position. And notice how the red arrow on the map reflects this position change as well.



Referring both to the map as well as the signs on the hallway walls, you should be able to navigate easily through the hospital rooms.

When you come to a door, hover your cursor over the door, and it will turn into a hand. If you want to move through the door, click and it will open. Some rooms have more than one entrance. For example, you can get to the CT control room by a door in the hallway, or you can access it from the CT imaging room.

Now that we have oriented ourselves to the tools for navigation, let's do a more real-time demonstration. You'll notice first that

in the upper left-hand corner, there is a label that tells you where you currently are positioned on the hospital floor. If we are here in the reception area, and we want to move to the CT control room, our map helps us see that we'll need to walk straight towards the emergency room, turn right, walk down the hallway, and then left at our final destination. So we first position our red arrow in the middle of the screen, and click to move forward. We are now standing in front of the Emergency room where we can see the signs further reminding us that we will need to turn right to get to the CT rooms. By positioning

our arrow toward the right of our window, the arrow points to the right and a click will turn us in that direction. Then we'll move forward down the main hallway. Now, on the left of us is the CT Room, and on the right is the Neuroendovascular Suite Control Room. So we will continue a little further down the hallway where we are in between the CT Control Room and the Neuroendovascular Suite. Now we'll need to change our position to face the door of the CT Control room by clicking once we see the left facing red arrow, then we click the door to open it. Now we have the CT Control Room door behind us, and the door to the CT Room in front of us. You'll notice that when you place your curser over the chair, it turns into a hand. This is how you sit at the computer to read images.

We can move from the control room into the imaging room by moving toward the door. You'll notice that the red arrow now places us inside the CT Room where we are viewing the machine as well as the main double-door entrance. When we leave the room through these doors and go out into the main hallway, we are looking at the door to the Neuroendovascular Suite Control Room. However, this time our map arrow is inverted. This means in order to go down towards the Emergency room, we want to go left on the map, which from our current position, means we want to turn right. Once we orient ourselves in the correct direction, we can move down the hall. If you find yourself at a dead end, just keep clicking on the right or left turn arrow, and eventually you'll find yourself facing the direction you want to go.

This Virtual Science Lab has been supported by NSF grant #0127561 and NIH/NCRR/SEPA grant #R25RR020425.

Thank you for watching this tutorial of the Overview of the Virtual Stroke Lab. We hope that you enjoy your virtual laboratory experience, made available from The Mind Project.